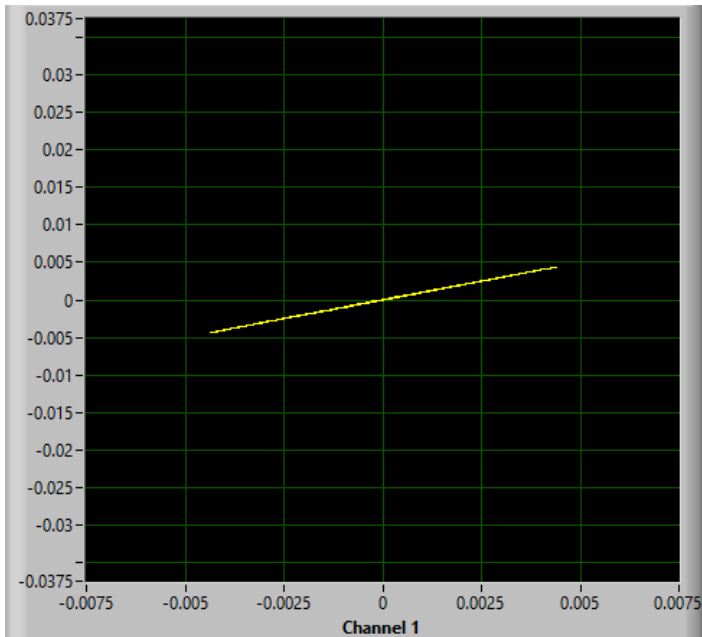


# Klon Centaur Transfer Function Analysis

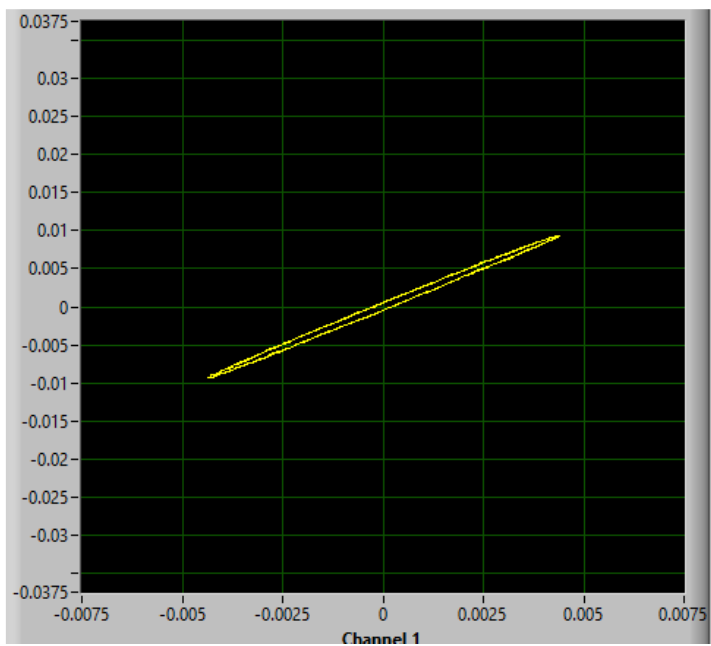
All tests, Treble is set to full.

## Transfer functions:

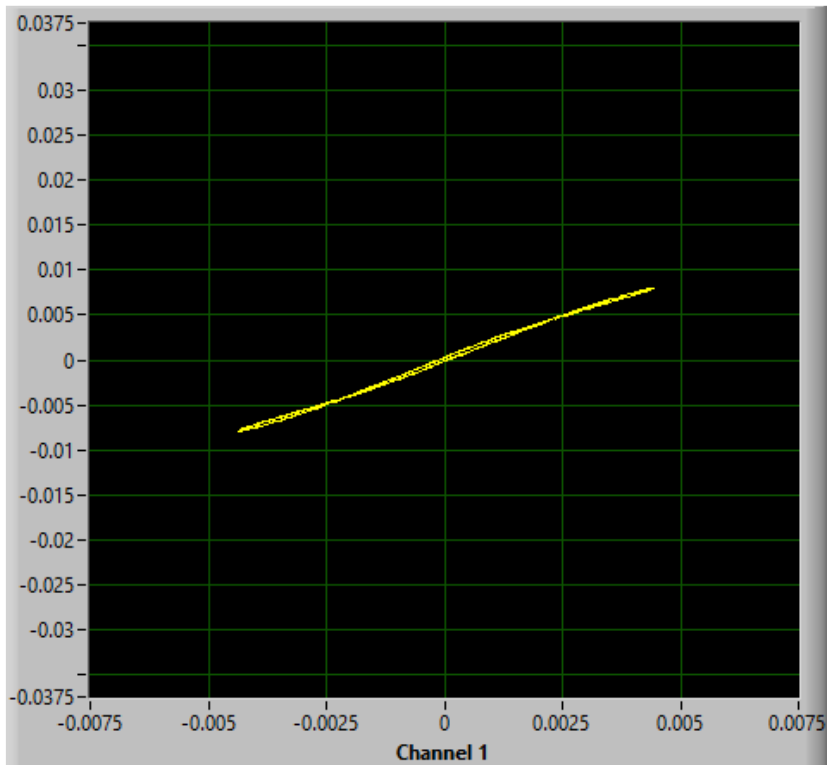
for Vol= 0 , Gain=0:



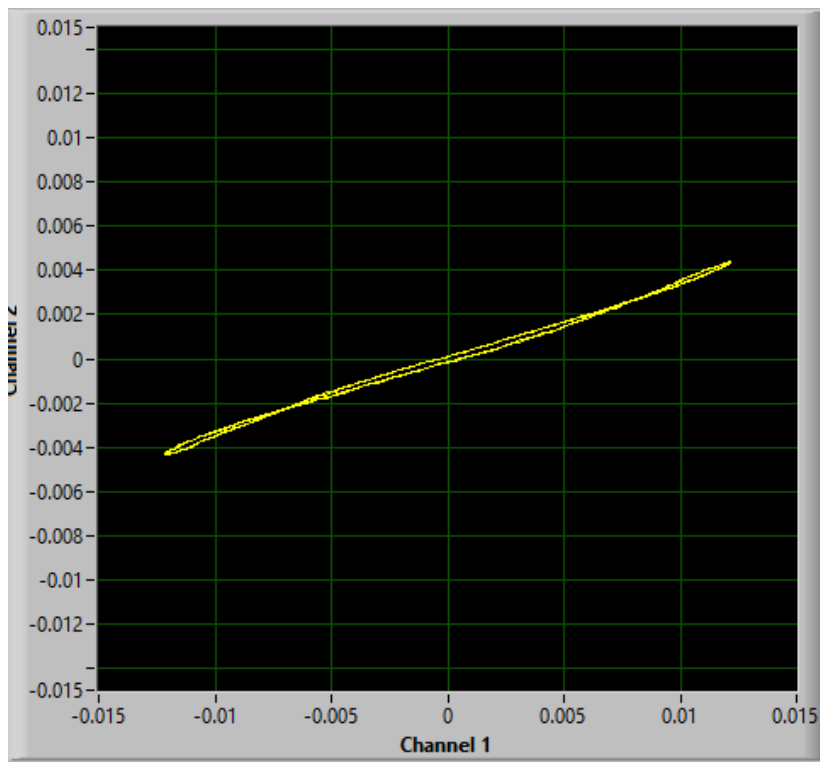
Vol=10, , Gain=0:



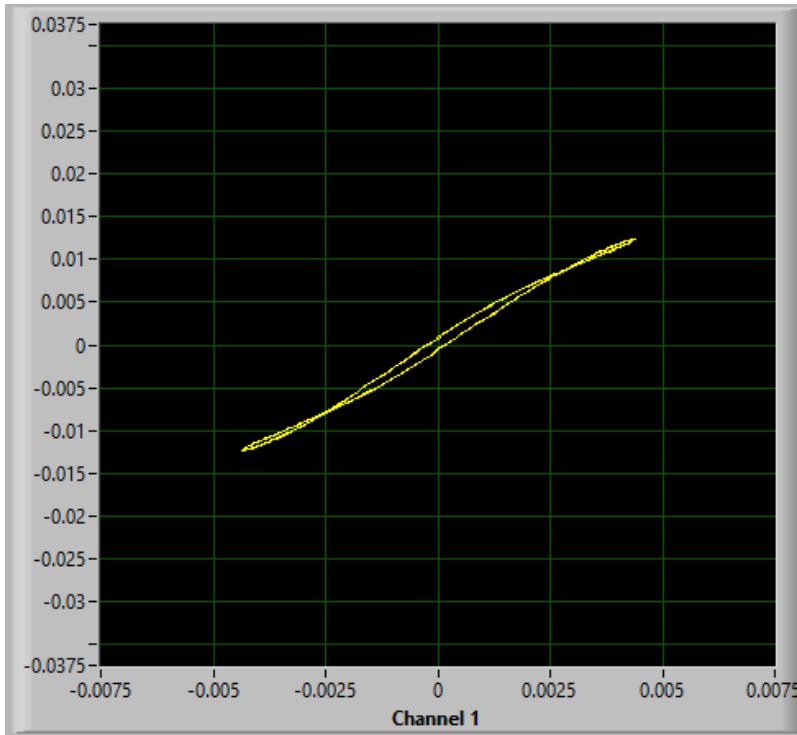
Vol=5, Gain=5



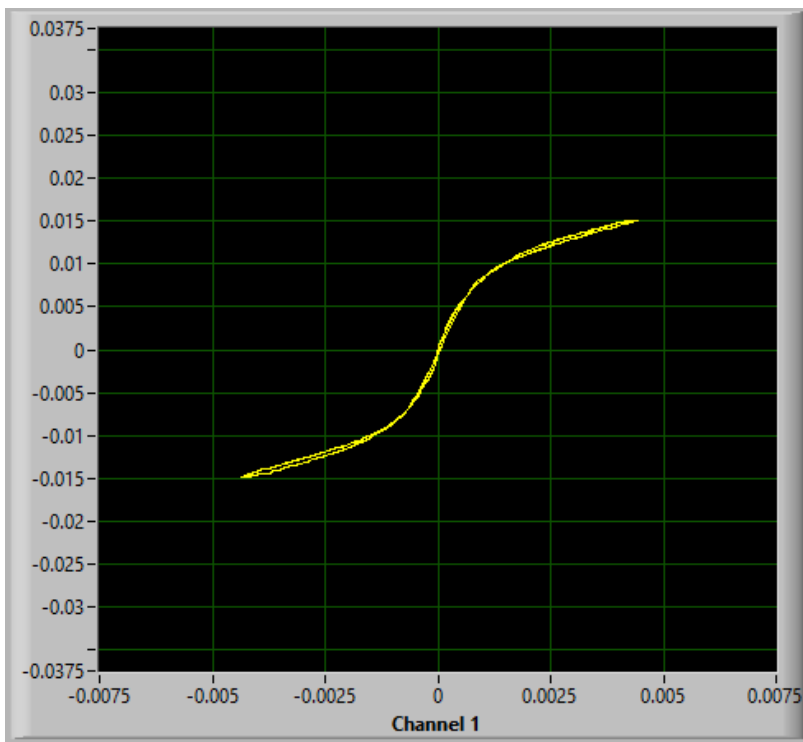
Vol=5, Gain=10



Vol=10, Gain=5

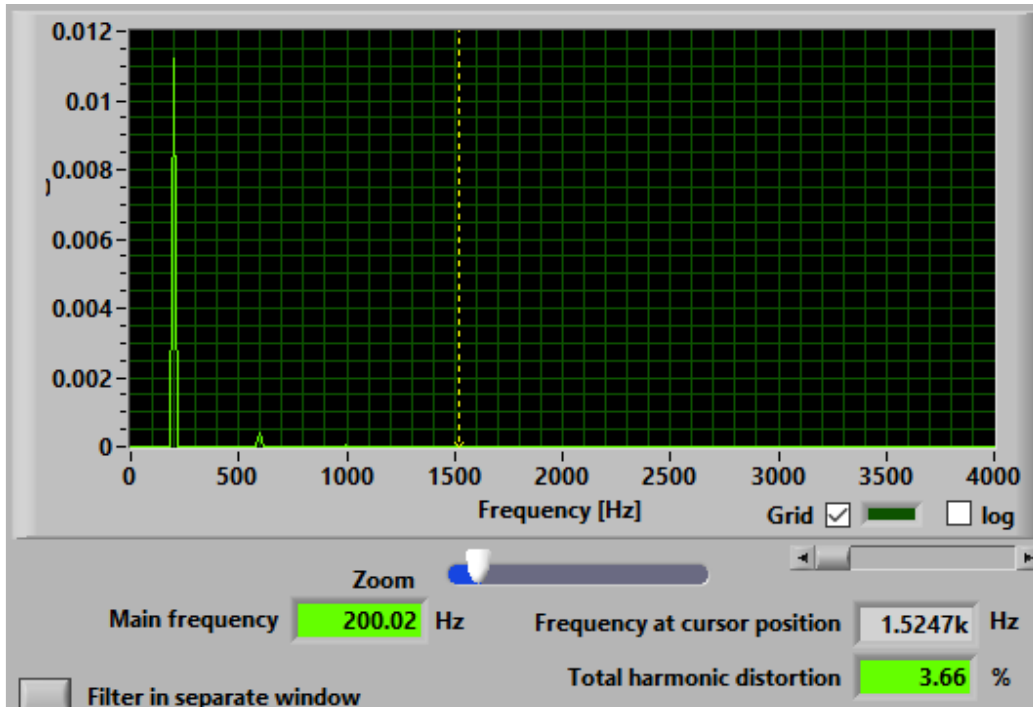


Vol=10, Gain=10

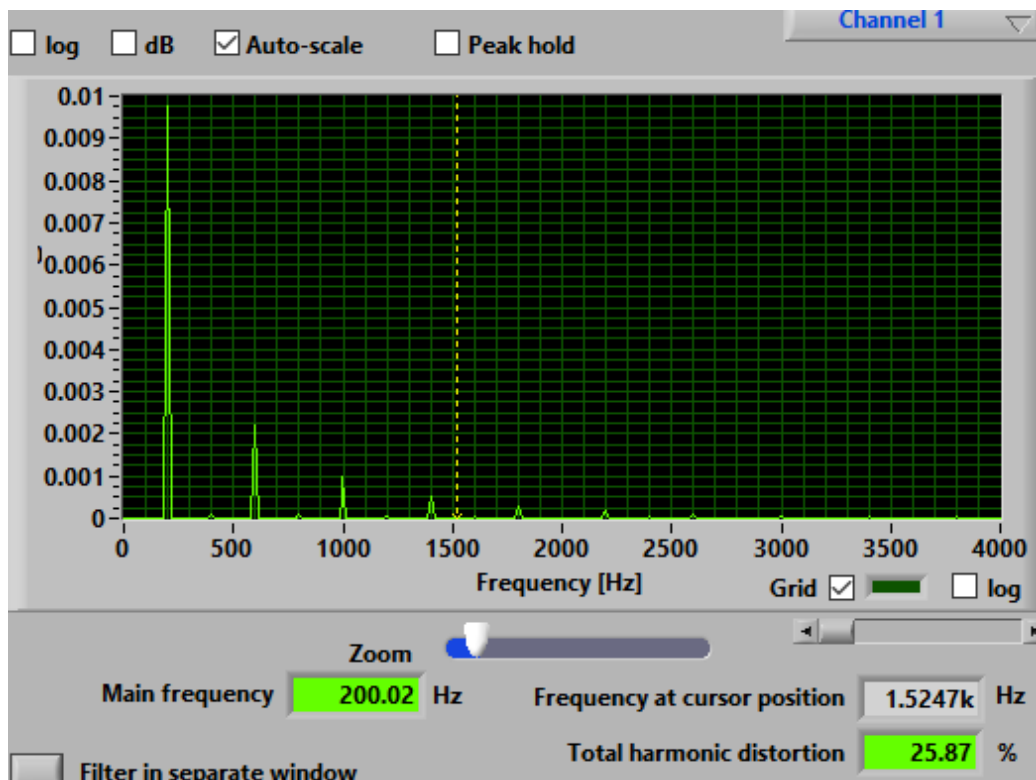


## Frequency Analysis

Vol=10, Gain=5

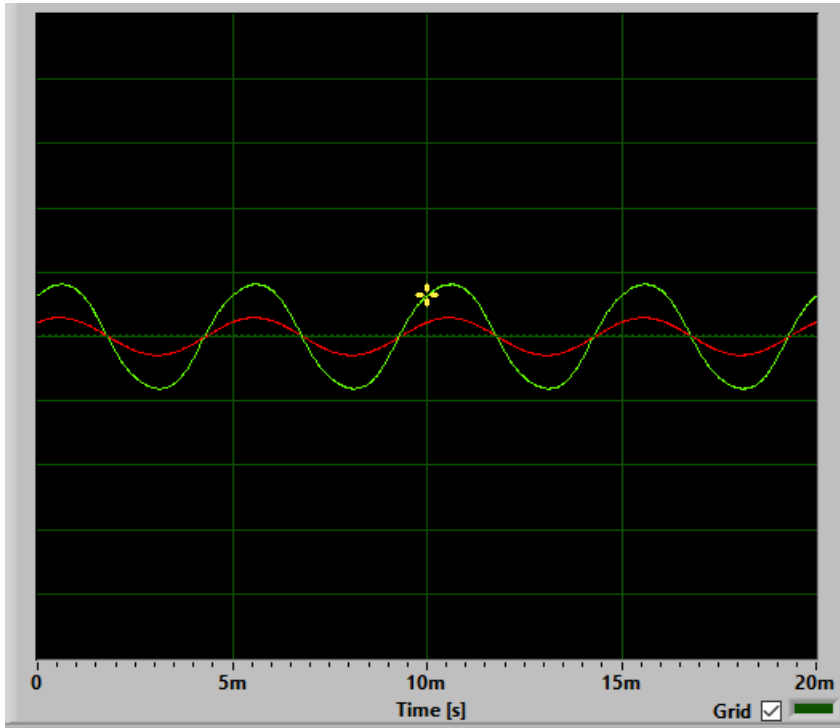


Vol=10, Gain=10



## Waveform Analysis

Vol=10, Gain=5



Vol=10, Gain=10

